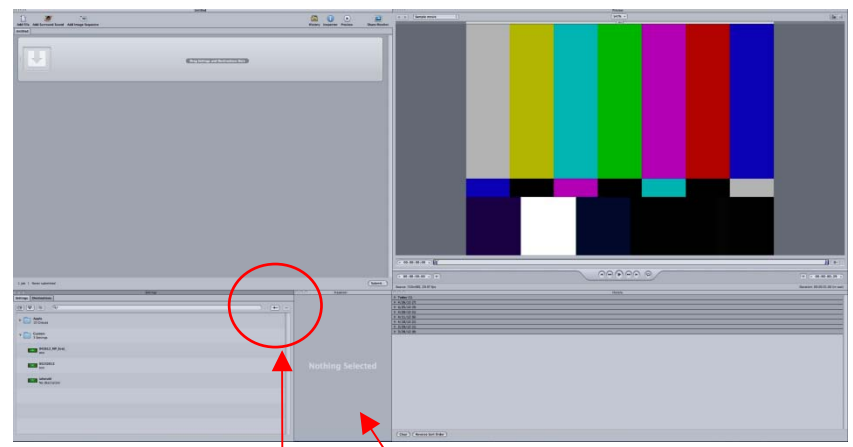


Step 1: Tell Compressor to make a 'Digital Cinema Package'

A. Go to the 'Settings' pane

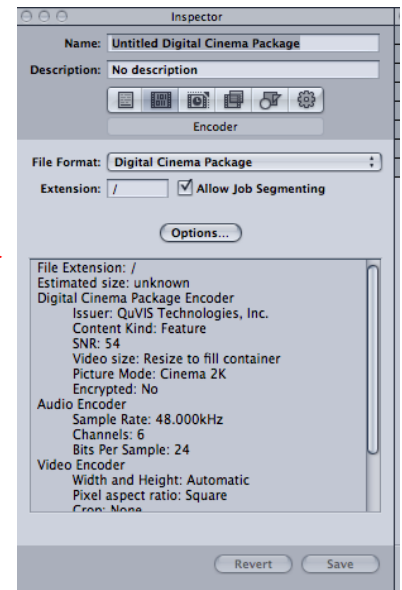


B. Click on the Plus symbol on the right side of the 'Settings' pane to bring up the drop-down menu



C. Select 'Wraprator DCP 3.0'

D. The 'Inspector' pane is now filled with default DCP settings.



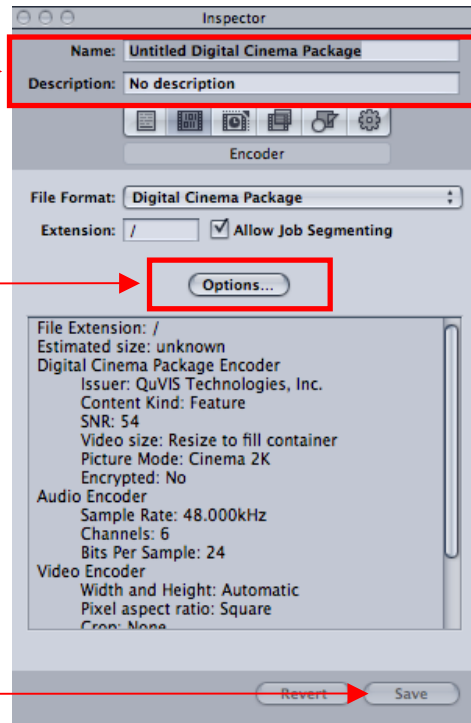
Step 2: Create and save instructions for your DCP

The 'Inspector' pane is automatically populated with the default packaging settings.

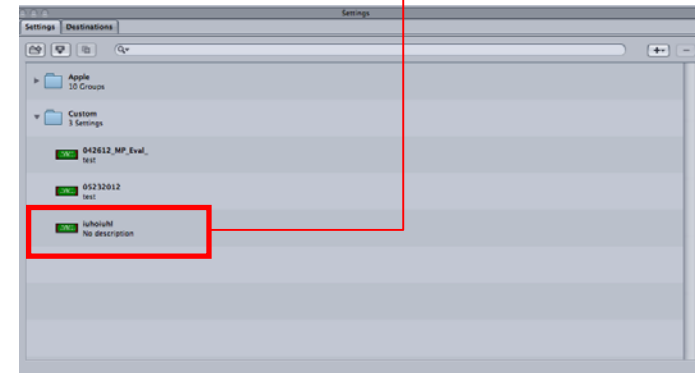
A. Enter a name and description for this set of DCP instructions

B. If you need to change the default settings, click on the 'Options' button
(See the manual for full details on each option)

C. Click 'Save'



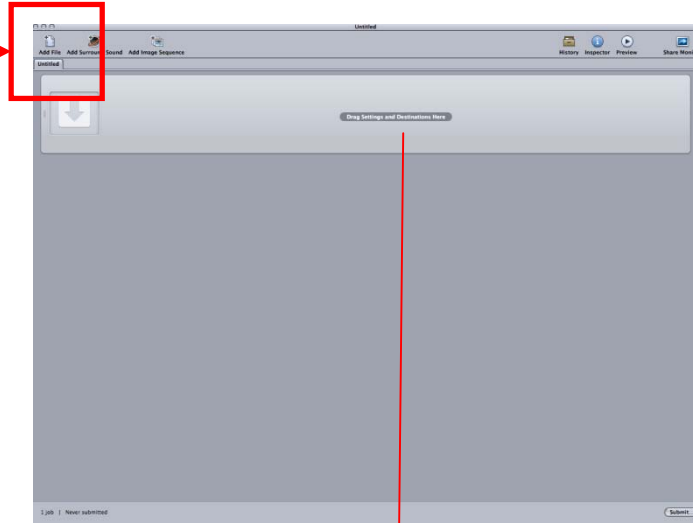
The set of instructions you just saved in 'Inspector' appears as a small green file in the 'Settings' pane.



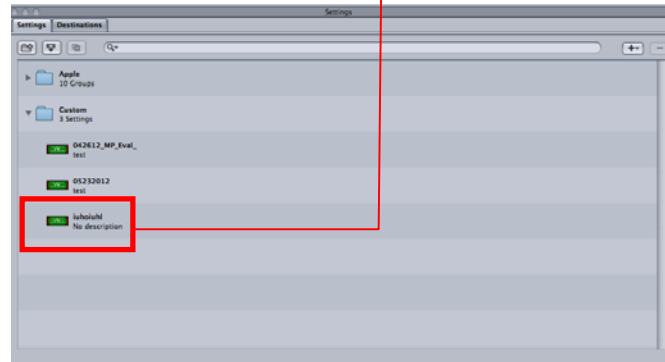
'Settings' pane

Step 3: Assign your DCP instructions to your source file

A. Go to the 'Untitled' pane. Click 'Add File' and select the source files to be saved as a DCP.



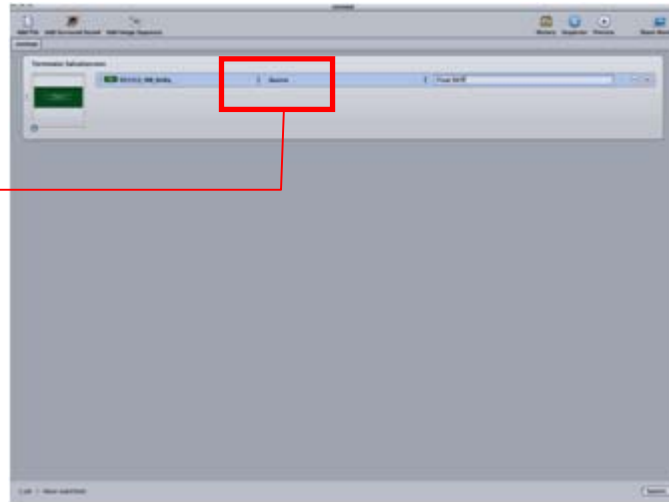
B. Drag the green instruction file from the 'Settings' pane into area of the 'Untitled' pane labeled 'Drag Settings and Destination Here.'



Step 4: Choose a Destination for Your DCP

Once you drag the instructions file into the 'Untitled' pane, a blue box will appear

A. Click on 'Source' and select a destination for your DCP

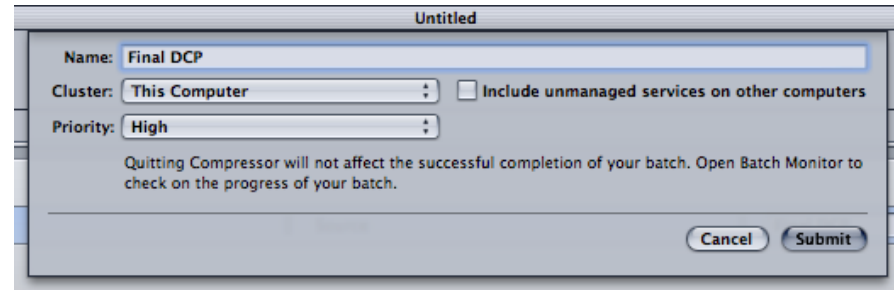


B. Click the 'Submit' button

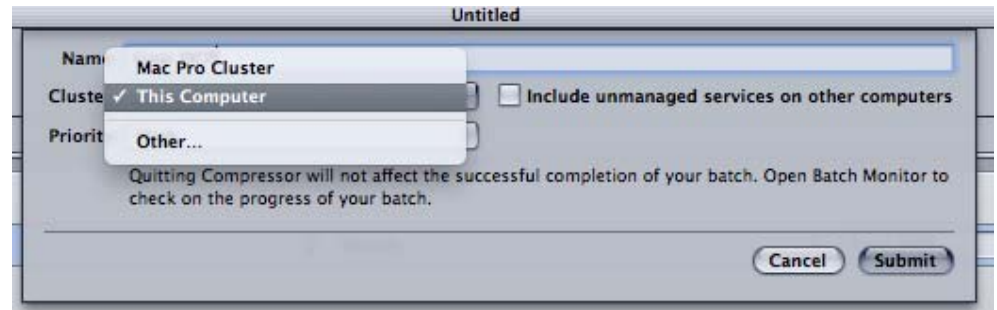
Step 5: Tell Compressor to process the source files to DCP

After you click 'Submit' a dialog box will open

A. Create a Name for the finished DCP.



B. Select 'This Computer' if processing will be done on single core, or select 'Cluster' to process on multiple cores. Cluster will be faster.

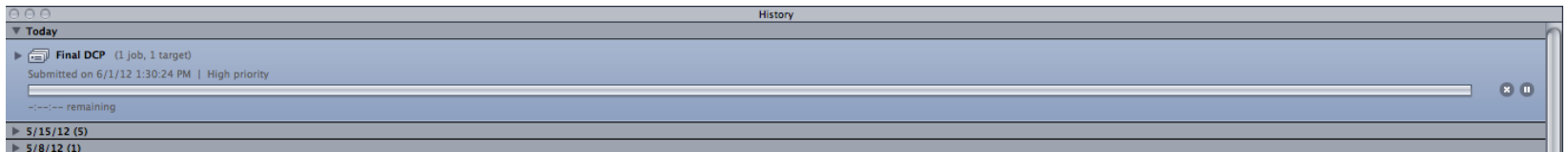


C. Click 'Submit' to process.

(Optional) Step 6: Track progress

- The time to create the DCP will depend on the size of the source files and the number of cores used to process the job.
- With a 12-core computer set to 'Cluster', processing takes about 90 seconds for every 60 seconds of source content.

The 'History' pane provides basic information on the progress of your job



Clicking on the 'Share Monitor' button on the 'Untitled' pane shows detailed progress information

